

New Withholding Tax Rates

On 18th June 2018, the Ministry of Planning and Finance (“MOPF”) issued the Notification No. 47/2018 to replace the Notification No. 51/2017 on Types and Rates of Withholding Tax (“WHT”) effective from 1st July 2018. The new rates of the WHT are as follows:-

Types of Payments	Citizens and Resident Foreigners	Non-Resident Foreigners
Interests on loans	0%	15%
Royalties for the use or licensing of trademarks, patents, copyrights, etc.	10%	15%
Payments under contracts made by state organizations, ministries and state-owned enterprises, local authorities, co-operatives, partnerships, companies, entities formed under any existing laws for procurements and for services render	2%	2.5%
Payments for services and procurements provided in Myanmar	-	2.5%

The minimum amount for deduction of the WHT has been changed to MMK1 million for the total payments within one year. If the WHT has already been paid in Myanmar, a Certificate of Domicile of Non-Resident Foreigner can be obtained from the Tax Office to avoid double taxation in home country of the non-resident foreigner.



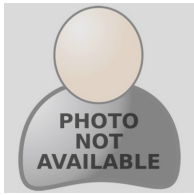
AUTHOR



Khin Khin Zaw
Partner | Yangon
khinkhinzaw@lawplusltd.com

Dr. Htwe Ei San

New Withholding Tax Rates



LawPlus Ltd.
Unit 1401, 14th Floor, Abdulrahim Place 990
Rama IV Road, Bangkok 10500, Thailand
Tel: +662 636 0662
Fax: +662 636 0663

LawPlus Myanmar Ltd.
Unit No. 520, 5th Floor, Hledan Centre
Corner of Pyay Road and Hledan Road, Kamayut Township,
Yangon, Myanmar
Tel: +95 (0)92 6111 7006
and +95 (0)92 6098 9752